



Menu of Memberships

Full Golf Family

Privileges: Unlimited golf and use of practice facilities, pool, tennis, fitness center; year-round. Family membership.

Initiation: \$5,000 Monthly Dues: \$474

Full Golf Junior

Privileges: Unlimited golf and use of practice facilities, pool, tennis, fitness center; year-round. Family membership.

Initiation: \$500

(no additional initiation required at age 35)

Monthly Dues: \$300

(begins paying Full Golf dues at age 35)

Full Golf Corporate

Privileges: Unlimited golf and use of practice facilities, pool, tennis, fitness center; year-round; Corporation may designate up to four (4) members, each with Individual privileges.

Initiation: \$8,000 Monthly Dues: \$1,250

Full Golf One Year Trial

Privileges: Unlimited golf and use of practice facilities, pool, tennis, fitness center; 12 month limit. Family membership.

Initiation: None Monthly Dues: \$474

Full Golf Individual

Privileges: Unlimited golf and use of practice facilities, pool, tennis, fitness center; year-round. Individual membership.

Initiation: \$3,000 Monthly Dues: \$375

Golf Only Individual (annual 7 day)

Privileges: Unlimited golf and use of practice facilities only; seven days per week; One year. Individual membership. (temporary offering; may not be available for renewal)

Pre-Paid Greens Fees: (payable on join date)

\$4,800 plus tax for all day tee times

\$1,950 plus tax for tee times after 1pm only

\$ 995 plus tax for tee times after 3pm only

Monthly Dues: None

Golf Only Individual (annual 4 day)

Privileges: Unlimited golf and use of practice facilities only; Monday thru Thursday only; One year; Individual membership. (temporary offering; may not be available for renewal)

Pre-Paid Greens Fees: \$4,000 plus tax (payable on join date)

Monthly Dues: None

Seasonal Golf Family

Privileges: Unlimited golf and use of practice facilities, pool, tennis, fitness center; All privileges and dues are continuous year-to-year, and apply during the months of Jan thru April, plus Nov-Dec only; May play golf outside of designated privilege period at the member-guest rate. Family membership.

Initiation: \$5,000 Monthly Dues: \$675

Weekday Golf Family

Privileges: Unlimited golf and use of practice facilities Monday thru Thursday only; pool, tennis, fitness center privileges seven days. May play golf outside of designated privilege period at the member-guest rate. Family membership.

Initiation: \$2,000 Monthly Dues: \$329

Menu of Memberships

(continued)



Weekday Golf Individual

Privileges: Unlimited golf and use of practice facilities Monday thru Thursday only; pool, tennis, fitness center privileges seven days; May play golf outside of designated privilege period at the member-guest rate. Individual membership.

Initiation: \$2,000 Monthly Dues: \$288

Club Sport Premier (Summer Golf)

Privileges: Unlimited golf May 1 thru Oct 31; use of practice facilities, pool, tennis, and fitness center year-round; May play golf outside of designated privilege period at the member-guest rate. Family membership.

Initiation: \$1,000 Monthly Dues: \$212

Club Sport Family

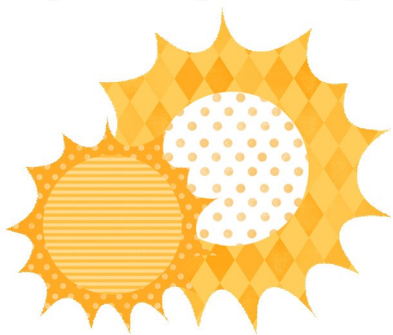
Privileges: Use of pool, tennis, and fitness center year-round; May play golf at the member-guest rate. Family membership

Initiation: \$600 Monthly Dues: \$126

Club Sport Individual

Privileges: Use of pool, tennis, and fitness center year-round; May play golf at the member-guest rate. Individual membership.

Initiation: \$500 Monthly Dues: \$95



Junior Tennis

Privileges: Use of tennis facilities year-round; Individual membership (age 18 & under).

Initiation: \$250 Monthly Dues: \$53

Club Social

Privileges: Use of pool year-round; May play golf at the member-guest rate. Family membership.

Initiation: \$500 Monthly Dues: \$78

Guest Access Pass

Privileges: Use of pool, tennis, and fitness center for one month; May play golf at the member-guest rate. Family membership.

Fee: \$250 per month Monthly Dues: None

Ala carte options available for \$100 per month for either pool or tennis or fitness center.

Driving Range Pass (Annual)

Privileges: Use of driving range and practice facility for one year. Pass is for member only; no guests. Golf is at the unaccompanied guest rate.

Fee: \$650 Individual, \$995 Family plus tax, per year

A la Carte Sport Individual

Privileges: Use of either pool, or tennis, or fitness center year-round; May play golf at the member-guest rate. Individual membership.

Initiation: \$300 Monthly Dues: \$70

Notes...

- “Family Membership” denotes privileges for the primary member, spouse, and children under the age of 24 living at home, full-time students or in the military.
- “Individual Membership” denotes privileges for the named primary member only. Family members may use the facilities only when accompanied by the member and paying applicable guest fees.
- A guest of a Member may only play golf six (6) times in any one calendar year at the Club’s member- guest rate, either as the guest of said member or as the guest of any other Member. All golf guests must register in the golf shop. Guests may be prohibited from golf at certain playing times including weekends, holidays and leagues (MGA, LGA, SMGA). Guests may not make their own tee time within a reserved member tee time.
- All memberships allow access to member social events.
- Cart fees are not included in any memberships.
- The club reserves the right to limit the number of memberships available in any given category. Membership offerings are subject to change without notice.

Marian McGill, Director of Sales
mmcgill@rmrcc.com or 480-981-6501 x 111

